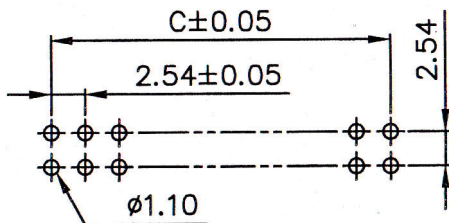
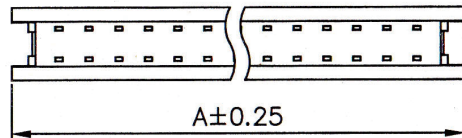
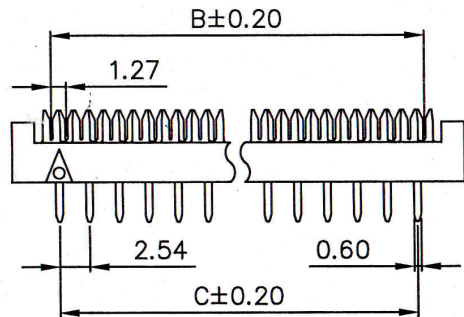
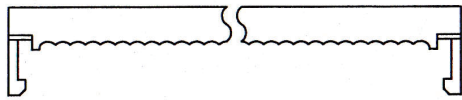
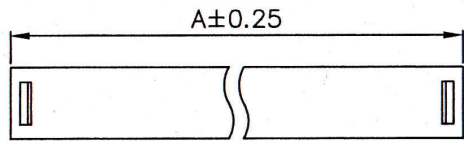
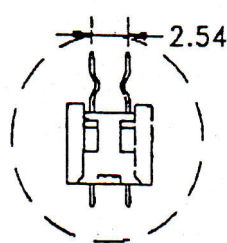
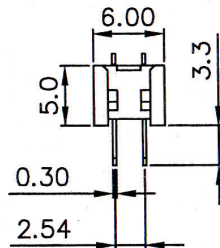
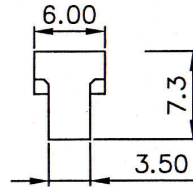


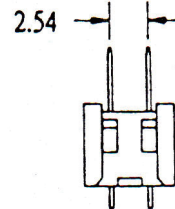
2.54MM x 2.54MM(0.100" x 0.100") DIP PLUG



Recommended P.C. Board Layout



KINKED CONTACTS



STANDARD CONTACTS

SPECIFICATIONS

Current Rating: 1.0 Amp

Dielectric Withstanding: 500V AC

Insulation Resistance: 1000MΩ Min

Contact Resistance: 15mΩ Max.

Operating Temperature: -40°C to +105°C

MATERIALS

Insulation Material: P.B.T+30%GF, UL94V-0

Contact Material: Copper Alloy

All materials must be RoHS compliant.

| No. of Contacts | Dimensions(mm) | | |
|-----------------|----------------|-------|-------|
| | A | B | C |
| 06 | 13.07 | 6.35 | 5.08 |
| 08 | 15.61 | 8.89 | 7.62 |
| 10 | 18.15 | 11.43 | 10.16 |
| 12 | 20.69 | 13.97 | 12.70 |
| 14 | 23.23 | 16.51 | 15.24 |
| 16 | 25.77 | 19.05 | 17.78 |
| 18 | 28.31 | 21.59 | 20.32 |
| 20 | 30.85 | 24.13 | 22.86 |
| 24 | 35.93 | 29.21 | 27.94 |
| 26 | 38.47 | 31.75 | 30.48 |
| 30 | 43.55 | 36.83 | 35.56 |
| 34 | 48.63 | 41.91 | 40.64 |
| 36 | 51.17 | 44.45 | 43.18 |
| 40 | 56.25 | 49.53 | 48.26 |
| 50 | 68.95 | 62.23 | 60.96 |
| 60 | 81.65 | 74.93 | 73.66 |
| 64 | 86.73 | 80.01 | 78.74 |

ORDERING INFORMATION:

P/N 254 $\frac{XX}{1} - \frac{XXX}{2} \frac{XX}{3} \frac{X}{4}$

1. CONTACT TYPE:

"DU" STANDARD CONTACTS

"DZ" KINKED CONTACTS

2. NO. OF CONTACTS:

006, 008, 010, 012, 014, 016, 018, 020,
024, 026, 030, 034, 036, 040, 050, 060,
064

3. CONTACT FINISH:

"G" FULL GOLD PLATED

"S" SELECTIVE GOLD PLATED

"T" FULL TIN PLATED

4. INSULATOR COLOR:

"B" BLACK (STANDARD)

"A" GRAY (OPTIONAL)